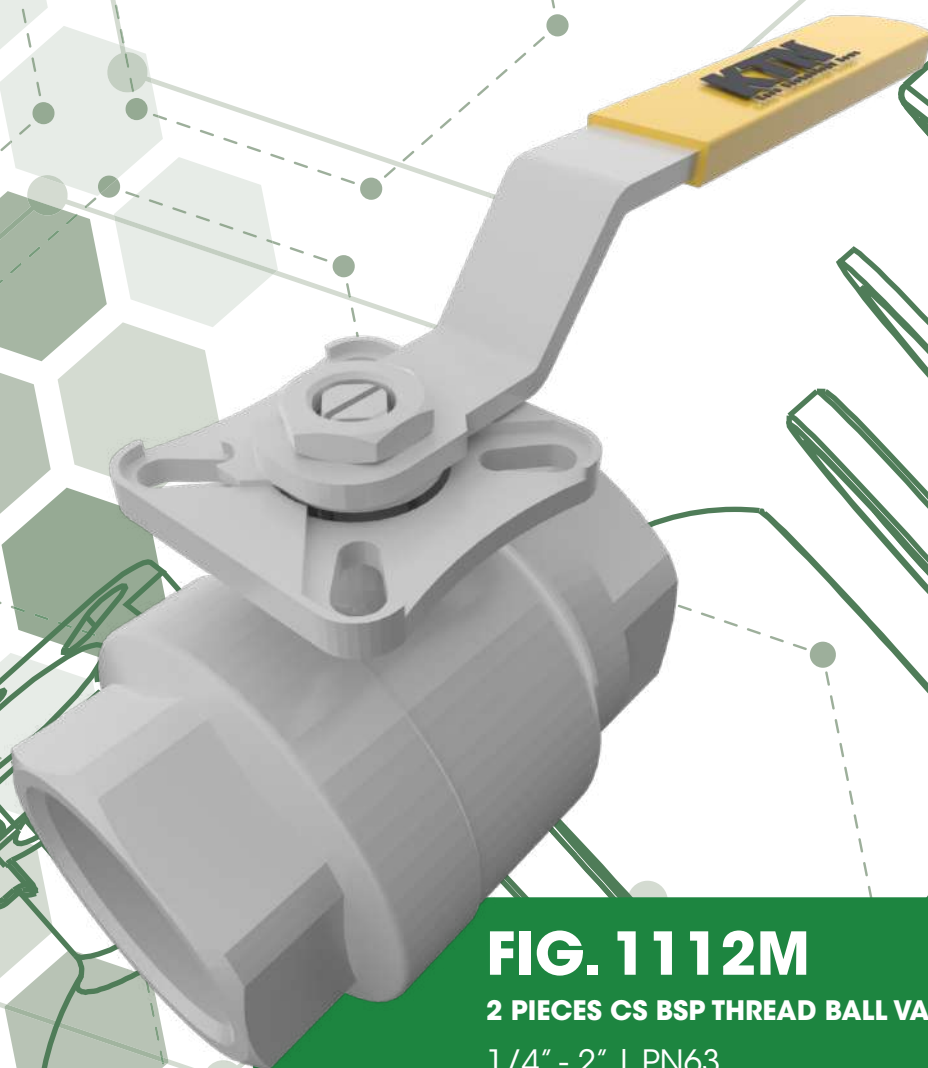




CE EAC  
No. 08190322KTN.UU45

**KTN**  
Kara Technology News



## FIG. 1112M

2 PIECES CS BSP THREAD BALL VALVE WITH MOUNTING PAD

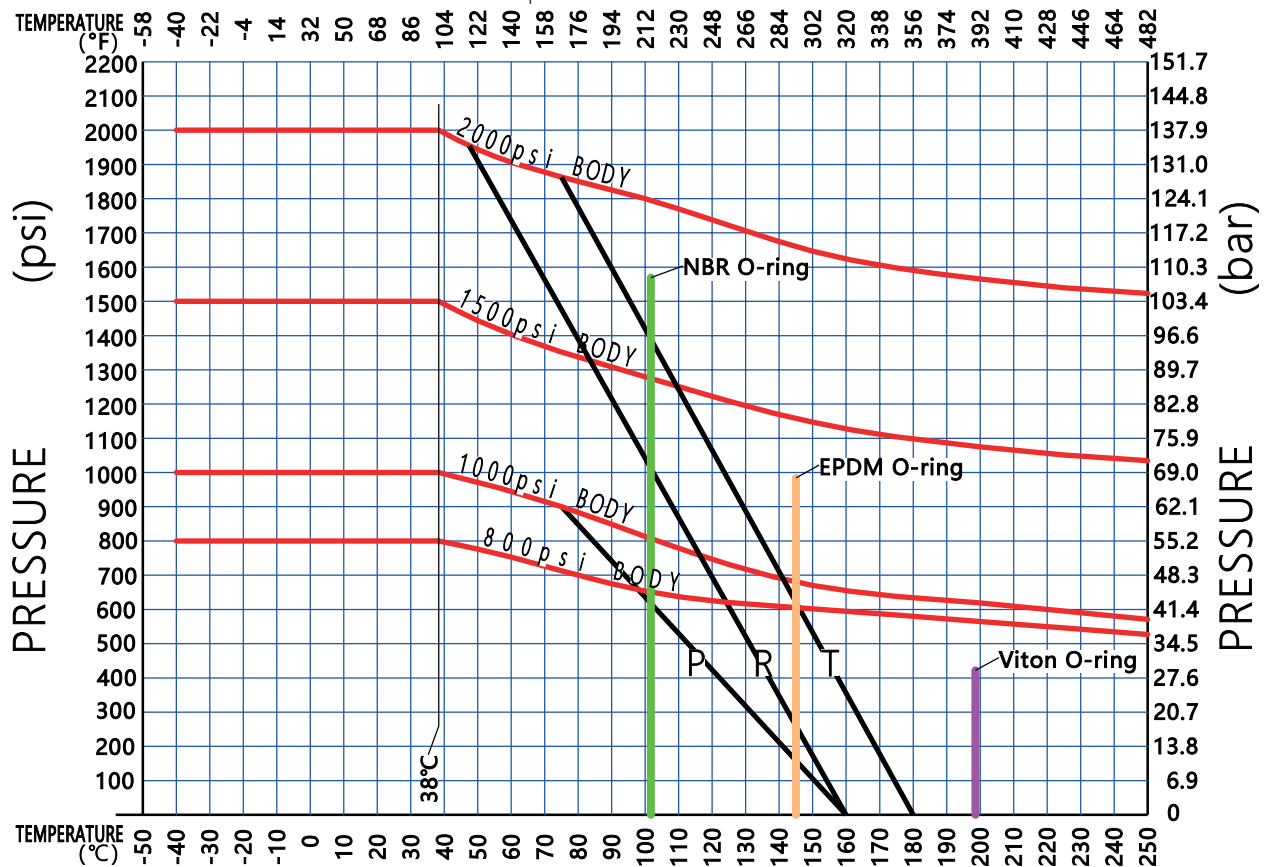
1/4" - 2" | PN63

GD SEAT MATERIAL		
SEAT MATERIAL	PECULIARITY	Tmax
PTFE	High corrosion resistance, good self - lubrication and wear resistance, easy to cold flow.	160°C
RPTFE	PTFE+15%GF	Resistance to creep, low coefficient of friction, resistance to chemical corrosion, good insulation.
	PTFE+15%CF	High strength, high temperature resistance, wear resistance, small coefficient of thermal expansion.
	TFM1600	Under high temperature and high pressure, shape denaturation is smaller, permeability is smaller, pressure recovery is better under high temperature, corrosion resistance is high.
	TFM4215	Smaller deformation and permeability under high temperature and high pressure, better stress recovery under high temperature, excellent heat resistance and chemical resistance, low friction coefficient.
PPL	High temperature resistance, high strength, radiation resistance, chemical corrosion resistance, good self-lubrication performance.	220°C
PEEK	High temperature, high pressure, high strength, chemical resistance to PTFE.	260°C

## CF8/CF8M

2019-1.1

Pressure and temperature curve for seals

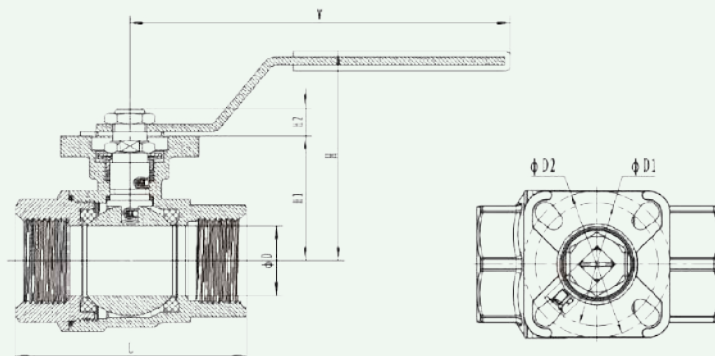
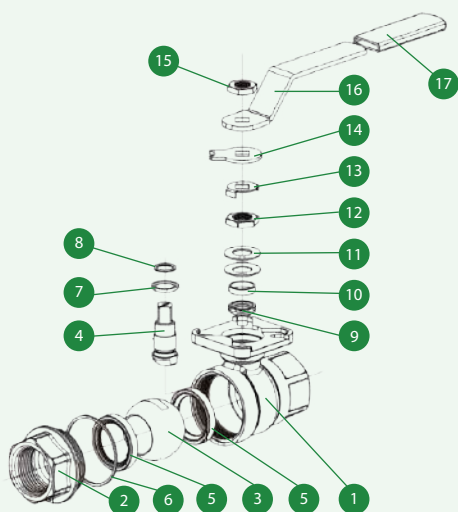


P-PTFE | R-PTFE+15% GLASS FIBER | T-PTFE+15% CARBON FIBER

The data is only for your reference. The performance may be affected under different work situations.

# KTN 1112M

CAST STAINLESS STEEL 2 PCS BSP THREAD BALL VALVE WITH MOUNTING PAD



## STANDARD SPECIFICATION

1. Design: API 608
2. Rating: 1000 PSI
3. Thread: ASME B1.20.1, BS21, DIN2999/259, ISO228-1, JIS B0203, ISO7-1
4. Inspection: API598, EN12266

## DESIGN FEATURES

1. Reduced bore
2. Blow-out proof stem
3. Antistatic device
4. ISO 5211 standard actuator mounting pad
5. Stem packing with O-ring design and multiple seal

## PART DRAWING

N°	Parts Name	Material		
1	Body	CF8M	CF8	WCB
2	Cap	CF8M	CF8	WCB
3	Ball	F316	F304	F304
4	Stem	F316	F304	F304
5	Seat	PTFE/RPTFE	PTFE/RPTFE	PTFE/RPTFE
6	Cap gasket	PTFE	PTFE	PTFE
7	Gasket	PTFE	PTFE	PTFE
8	O-ring	VITON	VITON	VITON
9	Stem packing	PTFE	PTFE	PTFE
10	Packing gland	F304	F304	F304
11	Spring washer	SS301	SS301	SS301
12	Nut	A2-70	A2-70	A2-70
13	Locking washer	304	304	304
14	Position washer	304	304	304
15	Nut	A2-70	A2-70	A2-70
16	Handle	304	304	304
17	Handle cover	PVC	PVC	PVC

## MEASURES

NPS	D	L	W	H	H1	H2	F	D1	D2	ISO5211	Weight (Kg)	Torque (N.m)
1/4"	11	50	115	63	37	9	9	36	42	F03/F04	0.4	3
3/8"	12.5	50	115	63	37	9	9	36	42	F03/F04	0.4	3
1/2"	15	55	115	63	38	9	9	36	42	F03/F04	0.36	3
3/4"	20	76	137	73	42.5	9	9	36	42	F03/F04	0.485	4.5
1"	25	83	137	75	46	9	9	42	50	F03/F04	0.805	5
1 1/4"	32	100	137	83	52	9	9	42	50	F03/F04	1.255	7
1 1/2"	38	103	205	94	60	11	11	50	70	F05/F07	1.695	8
2"	50	136	205	104	69.5	11	11	50	70	F05/F07	2.485	16