



CE EAC
No. 08190322KTN.UU45

KTN
Kara Technology News®

VÁLVULA DE BOLA BRIDAS DIN PASO TOTAL

DN15 - DN 200 | PN16-40

Para agua, petróleo y gas

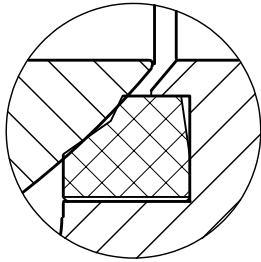
FULL BORE DIN FLANGED BALL VALVE

DN15 - DN 200 | PN16-40

For water, oil & gas

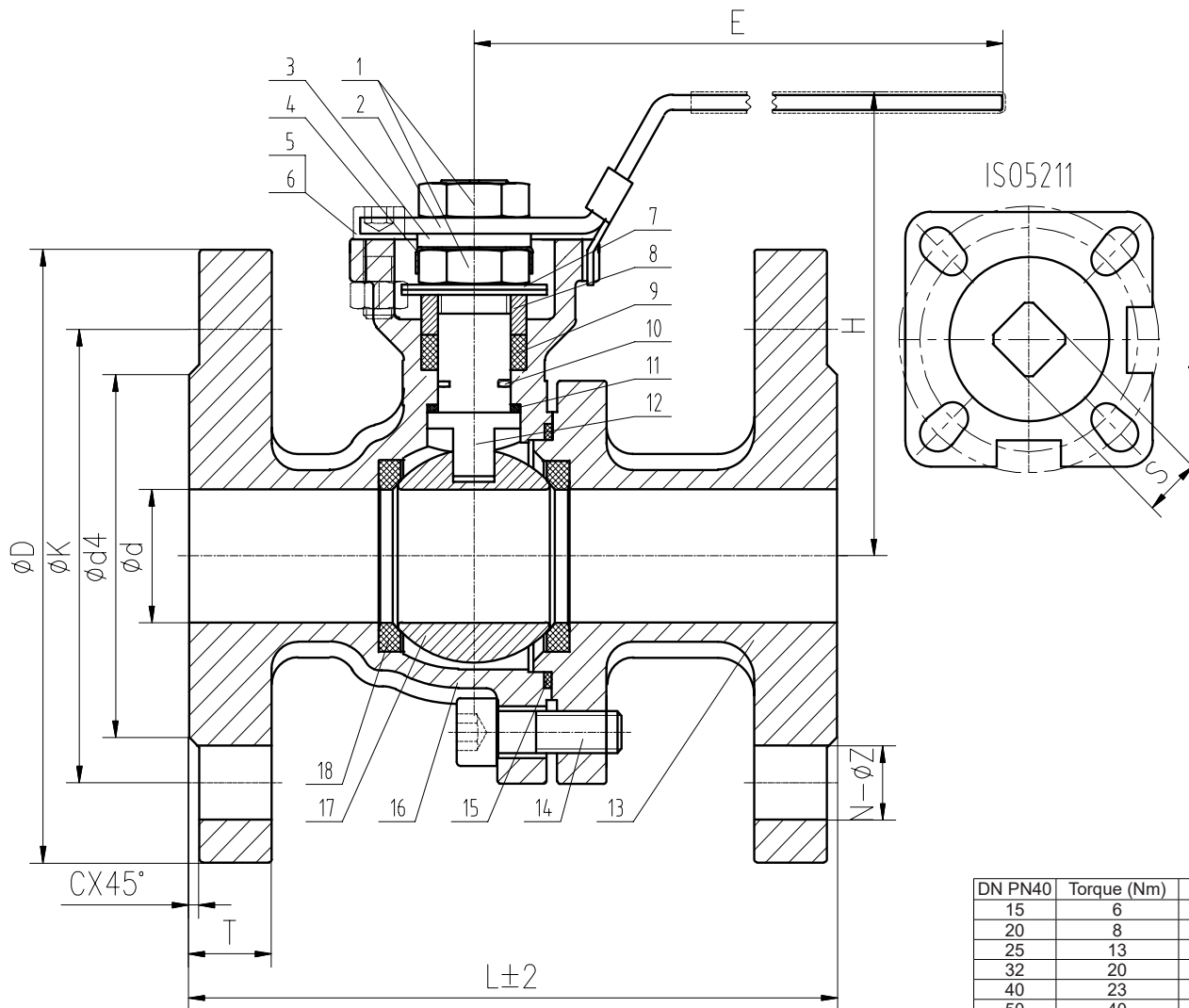


FIG.
1212

**FIG
1212**
VÁLVULA DE BOLA 2 PIEZAS BRIDAS DIN, PASO TOTAL PN16/PN40, DN15-50
DIN BALL VALVE, FULL BORE, 2 PIECES PN16/PN40, DN15-50


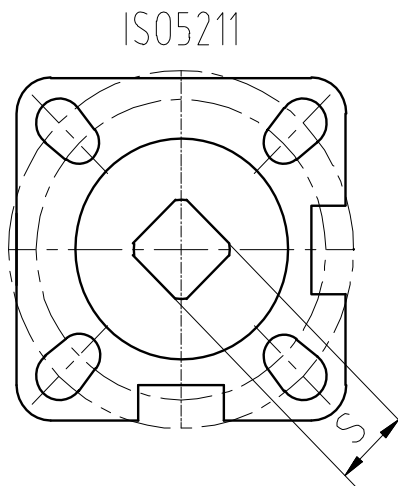
Fire Safe Design

18	Asiento	Seat	RPTFE
17	Bola	Ball	ASTM A182 F316
16	Cuerpo	Body	ASTM A351 CF8M
15	Junta	Gasket	PTFE
14	Tornillos hexagonales	Hex screws	ASTM A193 B8M
13	Bonete	Bonnet	ASTM A351 CF8M
12	Vástago	Stem	ASTM A182 F316
11	Cojinete de empuje	Thrust bearing	PTFE
10	Junta tórica	O-ring	Viton
9	Empaquetadura	Packing	PTFE
8	Prensaestopas	Gland	ASTM A276 316
7	Muelle de disco	Disc spring	SS 316
6	Tornillos hexagonales	Hex screws	ASTM A193 B8M
5	Tuerca	Nut	ASTM A194 8 M
4	Bonete antiexpulsión	Anti blowout bonnet	SS 316
3	Arandela	Washer	SS 316
2	Manivela	Handle	SS - PVC
1	Tuerca	Nut	ASTM A194 8M

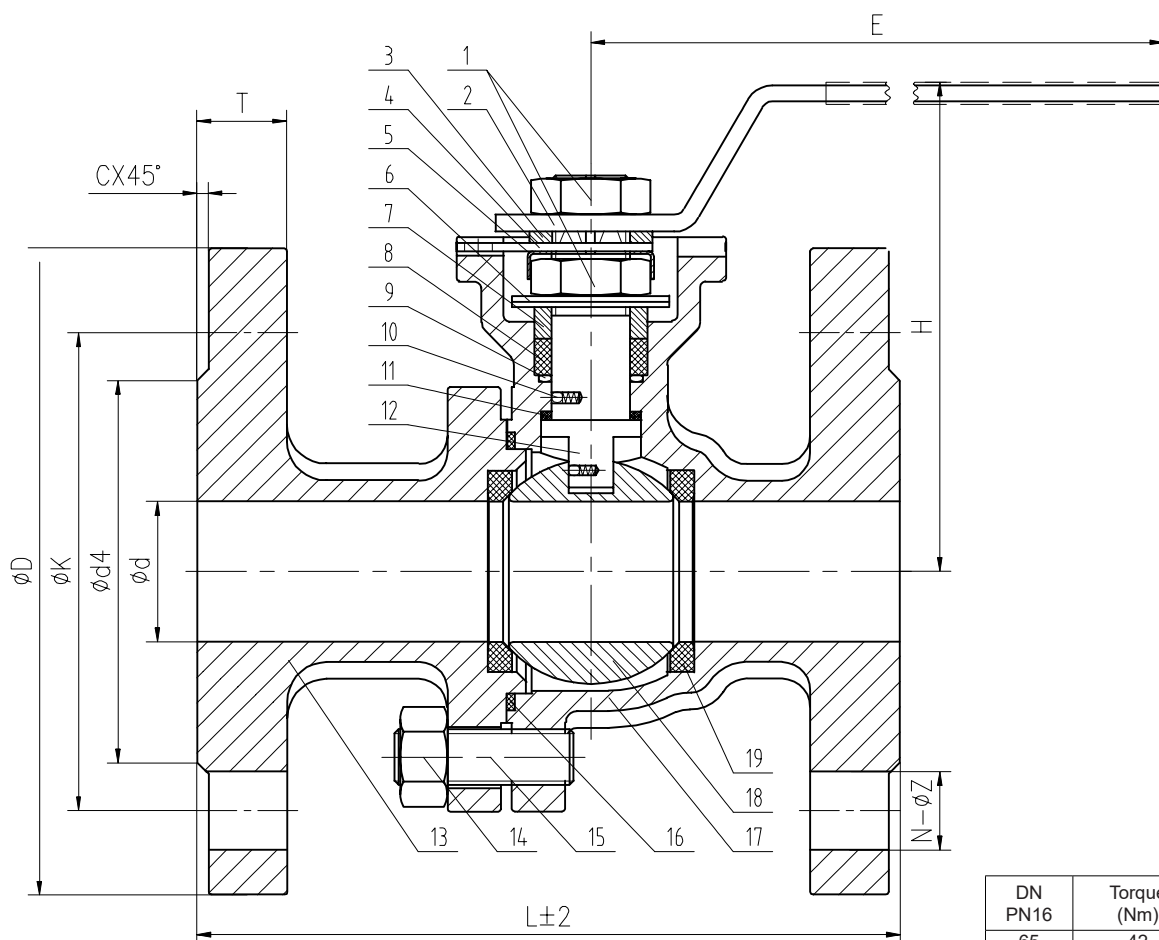


DN PN40	Torque (Nm)	Weight (Kg)
15	6	2.445
20	8	3.19
25	13	4.036
32	20	5.65
40	23	6.914
50	40	9.675

Código / Code	DN	"	d	d4	k	D	N-Z	C	T	L	ISO5211	S	H	E	
2323KTNB001	15	1/2"	15	45	65	95	4-14	2	14	115	F03 F04	9	130	185	PN16 PN40
2323KTNB002	20	3/4"	20	58	75	105	4-14	2	14	120	F03 F04	9	120	185	
2323KTNB003	25	1"	25	68	85	115	4-14	2	16	125	F04 F05	11	100	155	
2323KTNB004	32	1 1/4"	32	78	100	140	4-18	2	16	130	F04 F05	11	90	155	
2323KTNB005	40	1 1/2"	38	88	110	150	4-18	3	16	140	F05 F07	14	80	125	
2323KTNB006	50	2"	50	96	125	165	4-18	3	18	150	F05 F07	14	75	125	

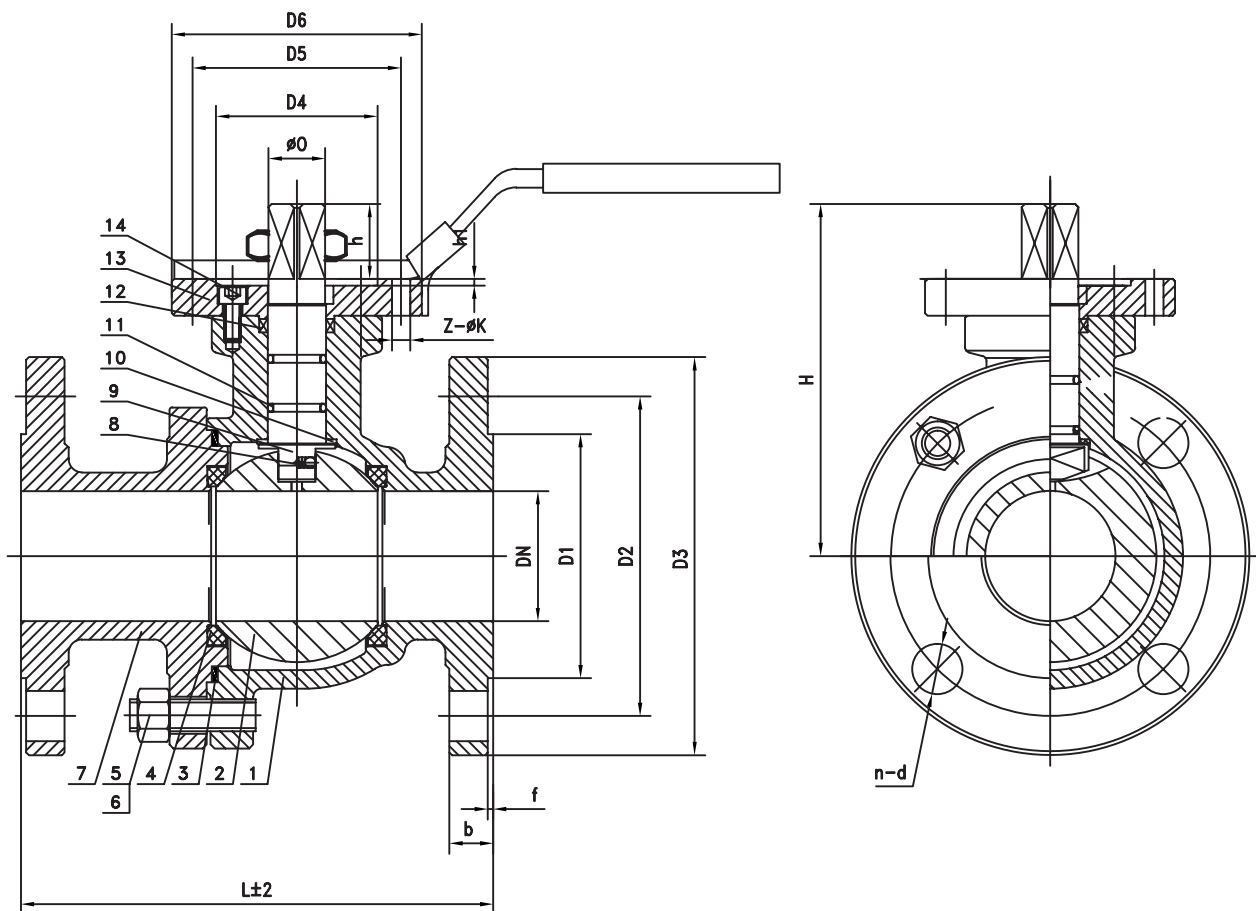
FIG 1212
VÁLVULA DE BOLA 2 PIEZAS BRIDAS DIN, PASO TOTAL PN16, DN65-100
DIN BALL VALVE, FULL BORE, 2 PIECES PN16, DN65-100


19	Asiento	Seat	RPTFE
18	Bola	Ball	ASTM A182 F316
17	Cuerpo	Body	ASTM A351 CF8M
16	Junta	Gasket	PTFE
15	Perno	Stud	ASTM A193 B8M
14	Tuerca	Nut	ASTM A194 8M
13	Bonete	Bonnet	ASTM A351 CF8M
12	Vástago	Stem	ASTM A182 F316
11	Cojinete de empuje	Thrust Gasket	SS316
10	Dispositivo antiestático	Anti-static devices	NBR
9	Junta tórica	O-Ring	PTFE
8	Empaquetadura	Packing	ASTM A276 316
7	Prensaestopa	Gland	SS 316
6	Arandela belleville	Belleville washer	SS 316
5	Arandela bloqueo	Stop - lock cap	SS 316
4	Límite bloqueo	Limit stop	SS 316
3	Arandela cuadrada	Square washer	SS 316
2	Manivela	Handle	SS + PVC
1	Tuerca	Nut	ASTM A914 8M



DN PN16	Torque (Nm)	Weight (Kg)
65	42	13.42
80	80	17.15
100	118	25.35

Código / Code	DN	"	d	d4	k	D	N-Z	C	T	L	H	E	ISO 5211	S	
2323KTNB00740	65	2 1/2"	65	122	145	185	4-18	3	16	170	140	260	F07 F10	14	PN16
2323KTNB00840	80	3"	76	138	160	200	8-18	3	18	180	153	260	F07 F10	17	
2323KTNB00940	100	4"	100	158	180	220	8-18	3	18	190	175	300	F07 F10	17	

**FIG
1212**
VÁLVULA DE BOLA 2 PIEZAS BRIDAS DIN, PASO TOTAL PN40, DN65-100
DIN BALL VALVE, FULL BORE, 2 PIECES PN40, DN65-100


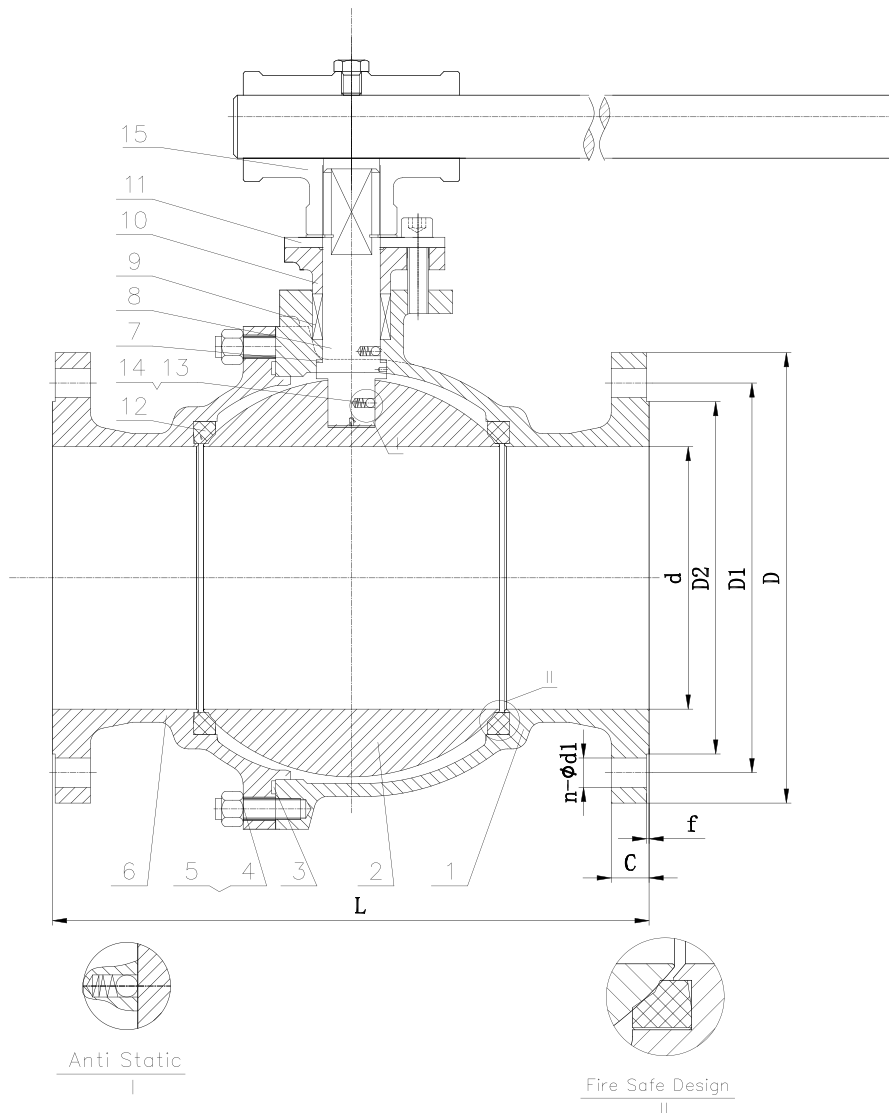
Código / Code	DN	"	L	D1	D2	D3	b	f	n	d	H	D4	D5	D6	O	h	h1	z	k	ISO5211		
2323KTNB00740	65	2 1/2"	170±1	122	145	185	22±1	3	4	18	150	55	70	90	17	25	4	4	10	F10	F07	PN40
2323KTNB00840	80	3"	180±1	138	160	200	24±1	3	8	18	190	55	70	90	17	25	4	4	10	F10	F07	
2323KTNB00940	100	4"	190±1	162	190	235	24±1	3	8	22	240	70	102	125	22	28	4	4	12	F10	F07	

14	Anillo de la empaquetadura	Packing ring	ASTM A182 F316
13	Perno	Stud	ASTM A193 D8M
12	Empaquetadura	Packing	Graphite
11	Junta tórica	"O" Ring	Viton
10	Cojinete de empuje	Thrust bearing	PTFE
9	Vástago	Stem	ASTM A182 F316
8	Dispositivo antiestático	Antiestatic device	SS316
7	Cuerpo izquierdo	Left body	ASTM A351 CF8M
6	Tuerca	Nut	ASTM A194 8M
5	Tornillo	Bolt	ASTM A193 B8M
4	Asiento	Seat	RPTFE
3	Junta	Gasket	AISI 3316 with graphite
2	Esfera	Ball	ASTM A182 F316
1	Cuerpo	Body	ASTM A351 CF8M

DN	Torque (Nm)	Weight (Kg)
PN40		
65	140	14
80	165	19
100	190	25

**FIG
1212**
VÁLVULA DE BOLA 2 PIEZAS BRIDAS DIN, PASO TOTAL PN16, DN150
DIN BALL VALVE, FULL BORE, 2 PIECES PN16, DN150

15	Palanca	Lever	C.S
14	Muelle antiestático	Anti-static spring	316SS
13	Dispositivo antiestático	Anti-static ball	316 SS
12	Anillo del asiento	Seat Ring	RPTFE
11	Límite bloqueo	Limit stop	ASTM A193 B8M
10	Prensaestopas	Gland	ASTM A351 CF3M
9	Empaquetadura	Packing	Graphite
8	Vástago	Stem	ASTM A182 F316L
7	Junta	Gasket	PTFE
6	Bonete	Bonnet	ASTM A351 CF3M
5	Tornillos	Bolt	ASTM A193 B8M
4	Tuercas	Nut	ASTM A194 8M
3	Juntas	Gasket	SS + Graphite
2	Bola	Ball	ASTM A182 F316
1	Cuerpo	Body	ASTM A351 CF3M



DN PN16	Torque (Nm)	Weight (Kg)
150	350	60.77

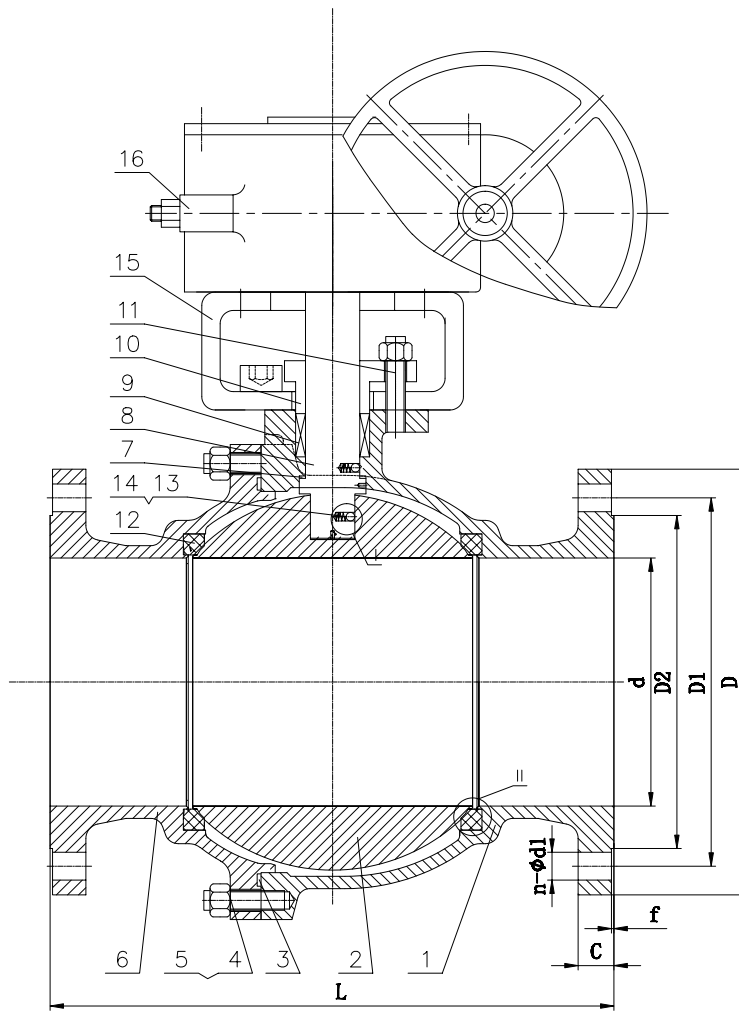
Código / Code	DN	"	L	d	D2	D1	D	C	f	ISO 5211	n-d1	PN16
2323KTNB00740	150	6"	350	150	212	240	285	22	3	F10 F12	8-Ø22	

FIG 1212

VÁLVULA DE BOLA 2 PIEZAS BRIDAS DIN, PASO TOTAL PN16, DN200
 DIN BALL VALVE, FULL BORE, 2 PIECES PN16, DN200

DIAGRAMA DE PERDIDA DE CARGA 561C
 FLANGED BALL VALVE HEADLOSS CHART 561C

16	Reductor	Worm Gear	Assembly
15	Yugo	Yoke	C.S
14	Muelle antiestático	Anti-static spring	316SS
13	Dispositivo antiestático	Anti-static ball	316 SS
12	Anillo del asiento	Seat Ring	RPTFE
11	Tornillo	Bolt	ASTM A193 B8M
10	Prensaestopas	Gland	ASTM A351 CF3M
9	Empaquetadura	Packing	Graphite
8	Vástago	Stem	ASTM A182 F316L
7	Junta	Gasket	PTFE
6	Bonete	Bonnet	ASTM A351 CF3M
5	Tornillos	Bolt	ASTM A193 B8M
4	Tuercas	Nut	ASTM A194 8M
3	Juntas	Gasket	SS + Graphite
2	Bola	Ball	ASTM A182 F316L
1	Cuerpo	Body	ASTM A351 CF3M



Anti Static
I



Fire Safe Design
II

DN PN16	Torque (Nm)	Weight (Kg)
200	560	87.32

Código / Code	DN	"	L	d	D2	D1	D	C	f	ISO 5211	n-d1	PN16
2323KTNB00740	200	8"	400	200	268	295	340	24	3	F10 F12	12-Ø22	

CARACTERÍSTICAS VÁLVULAS DE BOLA CON BRIDAS 1212
FLANGED BALL VALVE 1212 FEATURES

Cuerpo y bola acero inoxidable AISI 316
 Asientos en PTFE + 15% FV
 Tórica eje: Vitón
 Temperatura de trabajo: -20°C / 180°C

Vástago inexpulsable
 Diseño Firesafe
 Dispositivo antiestático (opcional)
 Bloqueo del manguito (opcional)
 Base de montaje ISO 5211
 Accesorios de automatización (opcional)

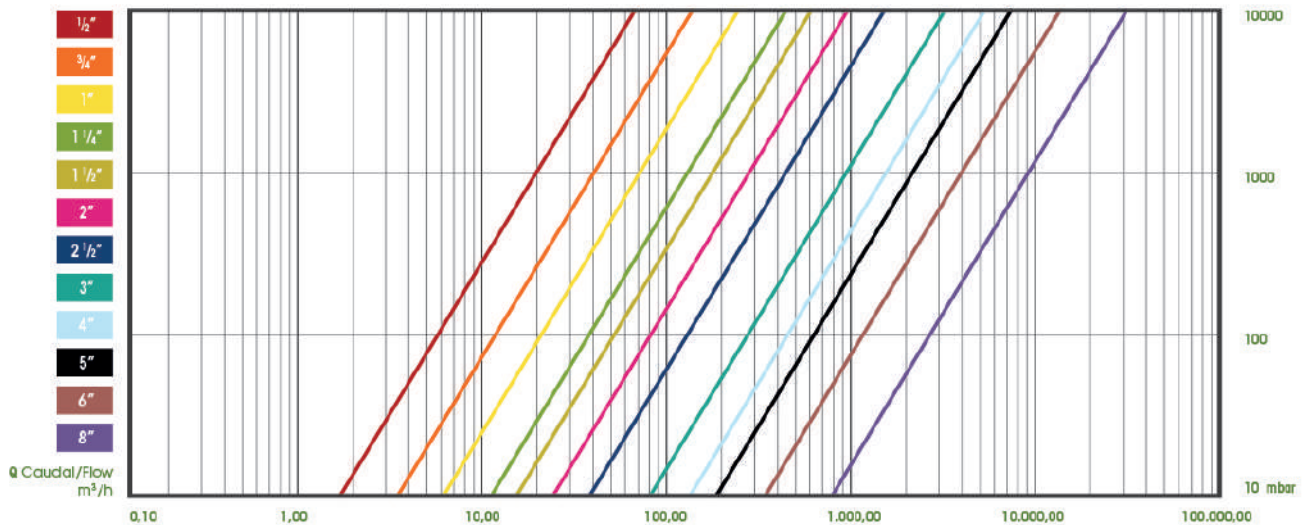
Diseño: DIN3357, EN12516-1
 Dimensión de la brida: DIN 2543-2545, EN1092-1 PN16/40
 Cara a cara: DIN3202 part1-F4(DN15-DN100)
 DIN3202 part1-F5(DN125-DN300)
 Inspección y pruebas: DIN3230, EN12266-1

Body and ball made of AISI 316 stainless steel
 PTFE + 15% FV ball seats
 Viton toric joints
 Working temperature: -20°C / 180°C

Blow-out proof stem
 Firesafe design
 Anti-static device (option)
 Locking device handle (option)
 ISO 5211 mounting pad
 Automation accessories (option)

Design: DIN3357, EN12516-1
 Flange dimension: DIN 2543-2545, EN1092-1 PN16/40
 Face to face: DIN3202 part1-F4(DN15-DN100)
 DIN3202 part1-F5(DN125-DN300)
 Inspection & testing: DIN3230, EN12266-1

DIAGRAMA DE PERDIDA DE CARGA VÁLVULAS DE BOLA CON BRIDAS 1212
FLANGED BALL VALVE HEADLOSS CHART 1212



VALORES KV,
KV VALUES

DN	"	m3/h
15	1/2"	19
20	3/4"	40
25	1"	65
32	1 1/4"	110
40	1 1/2"	180
50	2"	365
65	2 1/2"	495
80	3"	970
100	4"	1620
125	5"	2530
150	6"	4050
200	8"	8650

Cantidad de metros cúbicos por hora (m3/h) que circulará mediante la válvula generando una pérdida de carga de 1 bar.

Flow rate of water in cubic meter per hour (m3/h) that will pass through the valve generating a pressure drop of 1 bar.

CURVA PRESIÓN TEMPERATURA 1212
PRESSURE TEMPERATURE RATING 1212

