



CE EAC
No. 08190322KTN.UU45

KTN[®]
Kara Technology News



FIG. 823E

CARBON STEEL FLANGED EXPANSION JOINT

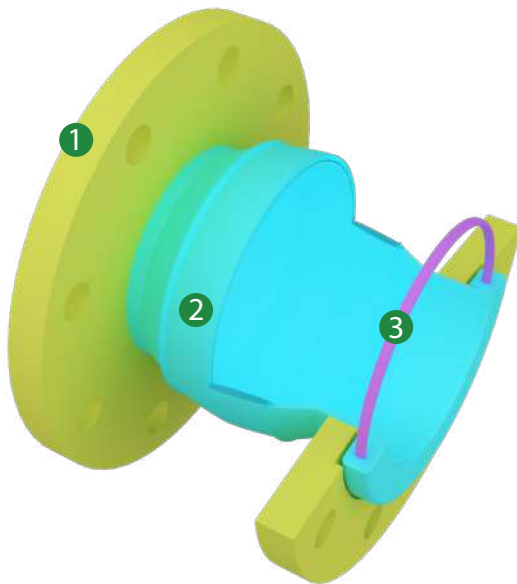
DN32 - DN600 | PN10-16-25

KTN EPDM EXPANSION JOINT:

Our KTN compensator is made up of two **galvanized carbon steel flanges** and a one-wave **EPDM bellow** with **WRASS certificate** for drinking water.

Thanks to its design, the **KTN 823E compensator** can **absorb high-intensity dimensional changes** such as those caused by thermal expansion or contraction of a pipe, conduit or vessel or absorb vibrations caused by motors, pumps, motors, etc.

The range is from DN32 to DN500. Its pressure range is PN10 while its burst range is PN30. It tolerates temperatures from -10°C to + 120°C



1 Flanged ends:

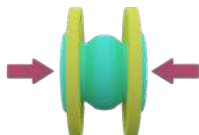
Galvanized carbon steel flange manufactured in standard BS EN1092-1 DIN, PN10/16/25 options, for pipping conection.

2 Rubber ball:

The frame is made of nylon fabric in the inside while the surface and the innerface is on WRAS EPDM .

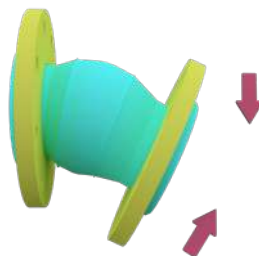
3 Reinforcement ring:

Reinforcement ring made in #55 steel attached to the tangent end for an extra reinforcement.



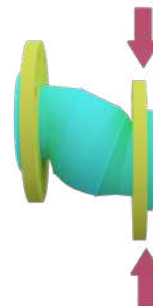
Axial movement:

Absorbs the change in the dimensional length of the bellows from its free length in a direction parallel to its longitudinal axis. It can be extension or compression.



Angular movement:

The bellows compensates for this displacement of a rotational nature with respect to the longitudinal axis of the bellows towards a point of rotation or flexion along its center line.

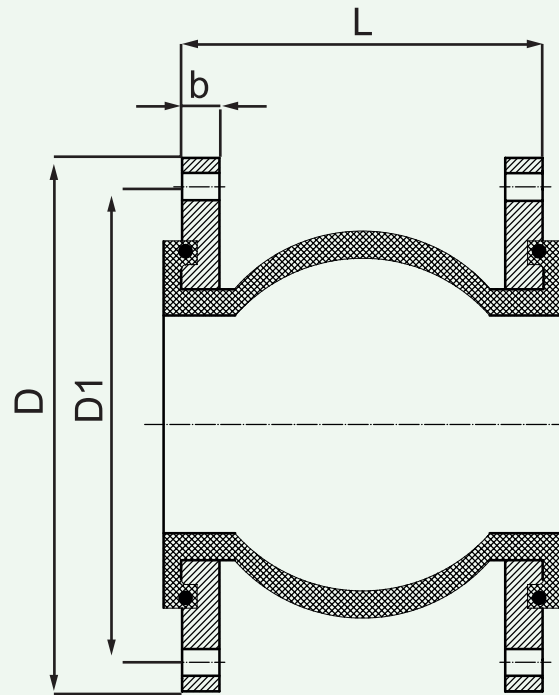


Lateral displacement:

The compensator absorbs the mechanical stress produced by the relative displacement of one end of the bellows to the other end in a direction perpendicular to its longitudinal axis.

KTN 823E

EPDM EXPANSION JOINT WITH GALVANIZED CARBON STEEL FLANGES



Model	823E - PN10	823E - PN16	823E - PN25
Flange standard	DIN		
Working pressure MPa (kgf/cm ²)	1.0 (10)	1.6 (16)	2.5 (25)
Explosion pressure MPa (kgf/cm ²)	2.0 (20)	3.0 (30)	4.5 (45)
Vacuum degree kpa (mm/Hg)	53.3 (400)	86.7 (650)	100 (750)
Suitable temperature °C (EPDM)	-10°C ~ +120°C		
Medium	Water		

OUTLINE DIMENSIONS										
DN	L		D		D1		b	n-ø	Weight (Kg)	
	PN10	PN16	PN10	PN16	PN10	PN16	PN16	PN16	PN10	PN16
32	95		140	140	100	100	16	18-4	2.7	3.3
40	95		150	150	110	110	16	18-4	3.5	4.5
50	105		165	165	125	125	18	18-4	4.5	5.8
65	115		185	185	145	145	18	18-4	5.2	6.2
80	135		200	200	160	160	20	18-8	6.3	8
100	150		220	220	180	180	20	18-8	9.2	11
125	165		250	250	210	210	22	18-8	11	13.5
150	180		285	285	240	240	22	22-8	15.7	18.9
200	210		340	340	295	295	24	22-12	22.4	29
250	230		395	405	350	355	26	26-12	26.3	37
300	245		445	460	400	410	28	26-12	32.8	43.8
350	255		505	520	460	470	30	26-16	45.5	57.1
400	255		565	580	515	525	32	30-16	51.4	75.5
500	255		670	715	620	650	34	33-20	63.5	104.3
600	260		780	840	725	770	34	36-20	81	128.9